

CHERRY MITTENS

- By Marianne Glørstad -



This pattern is for private use only. Not for distribution or sale of finished product.

© Marianne Glørstad, 2008.

marianneglorstad@gmail.com - <http://www.mariannesnetthus.com>

Thank you Kate (<http://soelvi.net>), for translating this pattern into English!

Size: Lady (the size can be adjusted)

Gauge: 10cm – 36 Sts

Needles: 3.0 mm

Yarn: Rowan 4-ply soft (28*36 Sts/10 cm with needles size 3.5 mm)

Explanations

K: knit

P: purl

K2tog: knit 2 together

SSK: slip slip knit

M1: make one stitch

CB4: slip the next 2 Sts onto cable needle, hold behind work and knit the next 2 Sts, k the 2 Sts from the cable needle

C4F: slip the next 2 Sts onto the cable needle, hold in front and knit the next 2 Sts, k the 2 Sts from the cable needle.

T3B: slip the next stitch onto cable needle, hold behind work and knit the next 2 Sts, p the stitch from the cable needle

T3F: slip the next 2 Sts onto cable needle; hold to front of work and p the next stitch, k the 2 Sts from the cable needle.

K1 tfl: knit 1 through the back loop

Rib: K2, p2

Cast on 60 Sts. Knit one row. Knit rib (K2, p2) for 10 cm. Purl one row.

Now it is time to start on the pattern.

Inside the mittens: 30 Sts Double moss Sts.

On front: Knit diagram A (30 Sts)

RIGHT MITTEN:

K2 (thumb, diagram C), k28 double moss stitch (diagram B). Follow diagram A for the last 30 Sts.

Continue with diagram A (front) and double moss Sts Inside the mitten until the thumb reaches 20 Sts. Set these sts aside on scrap yarn, continue with making 2 Sts upon these. Continue until the cabling-pattern in front is done, and repeat row 53-56 until the mitten is 4 cm before full length. Start decreasing.

Decrease after the diagram like this:

Row 57 inside: ssk, 26 double moss Sts, k2tog
 Front: k1tbl, p2, k4, ssk, k12, p2, k4, p2, k1tbl

Row 58 inside: 28 double moss Sts
 Front: K1tbl, p2, k4, p14, k4, p2, k1tbl

Continue decreases after the diagram A, and inside the mitten like row 57-58, when the decreases are finished, pull the thread through the rest of the Sts, fasten thread well.

LEFT MITTEN:

The left mitten starts with diagram A, the front. Knit diagram A, 28 Sts Double moss Sts (B), K2 (thumb; C). Follow the procedure of the right mitten.

THUMB:

20 Sts

Knit until thumb is 1 cm before full length. Start decreasing:

Row 1: K2tog, k1, k2tog (twice), k1, k2tog (twice), k1, k2tog (twice), k1, k2tog (12 sts)

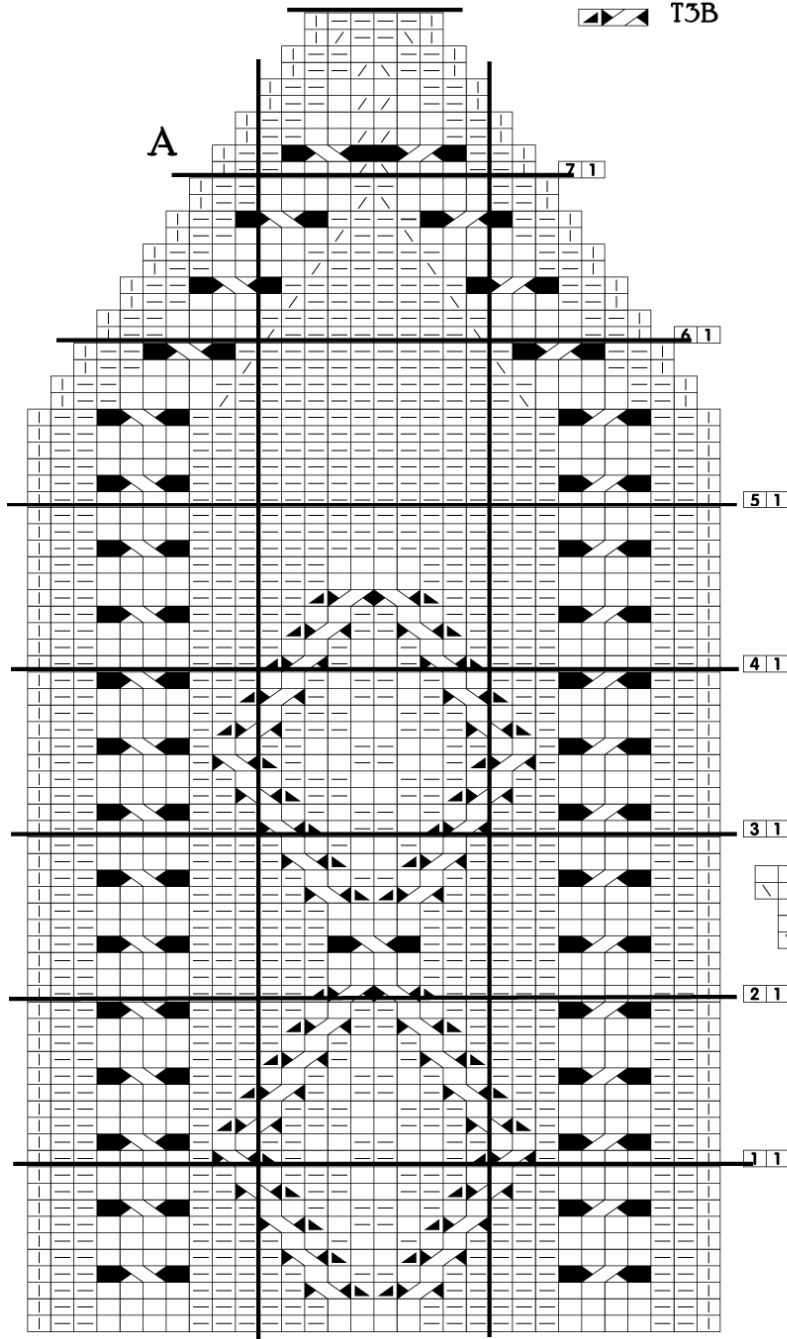
Row 2: Knit

Row 3: K2tog the whole round (6 sts)

Pull the thread through the Sts. and fasten well.

Diagrams

- Knit on right side, purl on wrong side
- ▤ K1tbl
- ▥ Purl on right side, knit on wrong side
- ▧ K2tog
- ▨ SSK
- ▩ C4F
- CB4
- T3F
- ▬ T3B



**B - Double
moss sts**



C ▧ M1
▨ M1

